

Shri Shivaji Shikshan Prasarak Mandal, Barshi Dist : Solapur (MS) – 413401
Board of Directors and Members For the Year – 2021-2024

Dr. Babanrao Yashwantrao Yadav, President

Shri. Nandkumar Narayanrao Jagdale, Vice-President

Shri Prakash Trimbak Patil , General Secretary

Shri. Arun Pralhad Debadwar, Joint Secretary

Shri. Jaykumar Chaturbhuj Shitole, Treasurer

Dr. Gulabrao Manikrao Patil, Member

Shri. Tanaji Parshuram Shingare, Member

Dr.Vilas Bhimrao Deshmukh, Member

Shri. Rajendra Ramchandra Pawar, Member

Shri. Vishnu Sambhaji Patil, Member

Shri. Dilip Shrirang Revadkar, Member

Shri. Suresh Bapurao Patil, Member

Shri. Sopan Krushna More, Member

Shri. Shashikant Shahu Pawar, Member

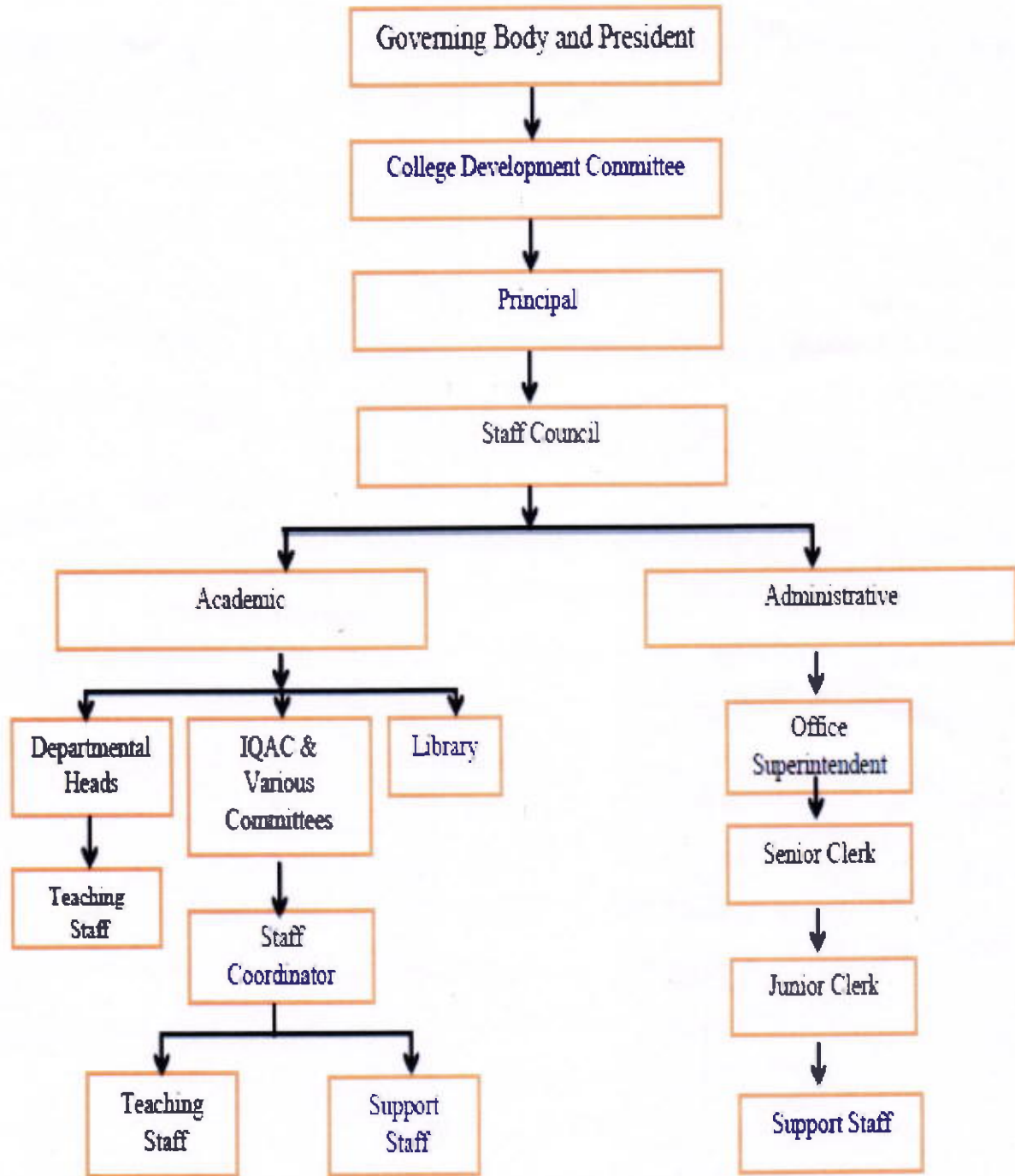
Shri. Dilip Madhukar Mohite, Member




Principal

**B.P. Sulakhe Commerce
College, Barshi-413411**

Organizational structure of the institution



B.P. Sulakhe
Principal
B.P. Sulakhe Commerce
College, Barshi-413411